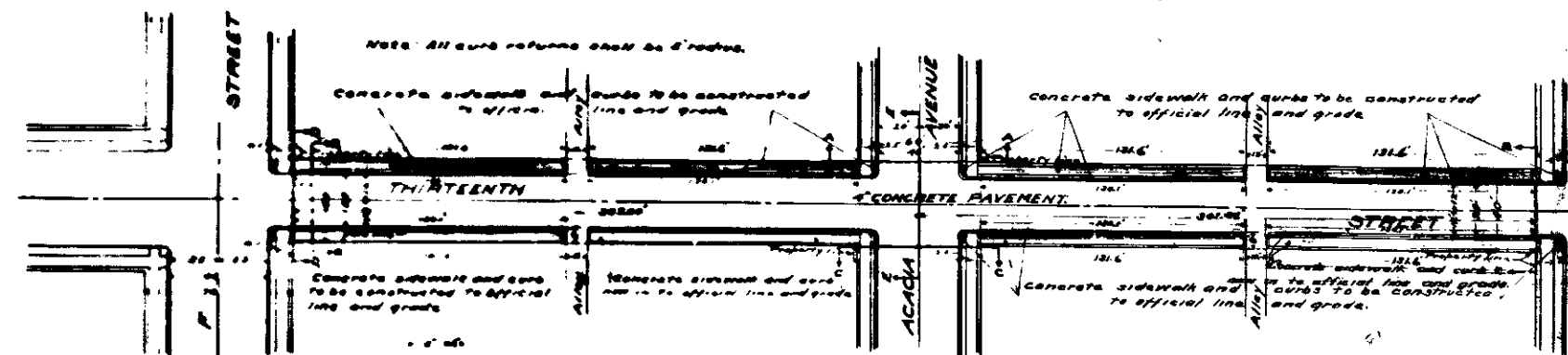


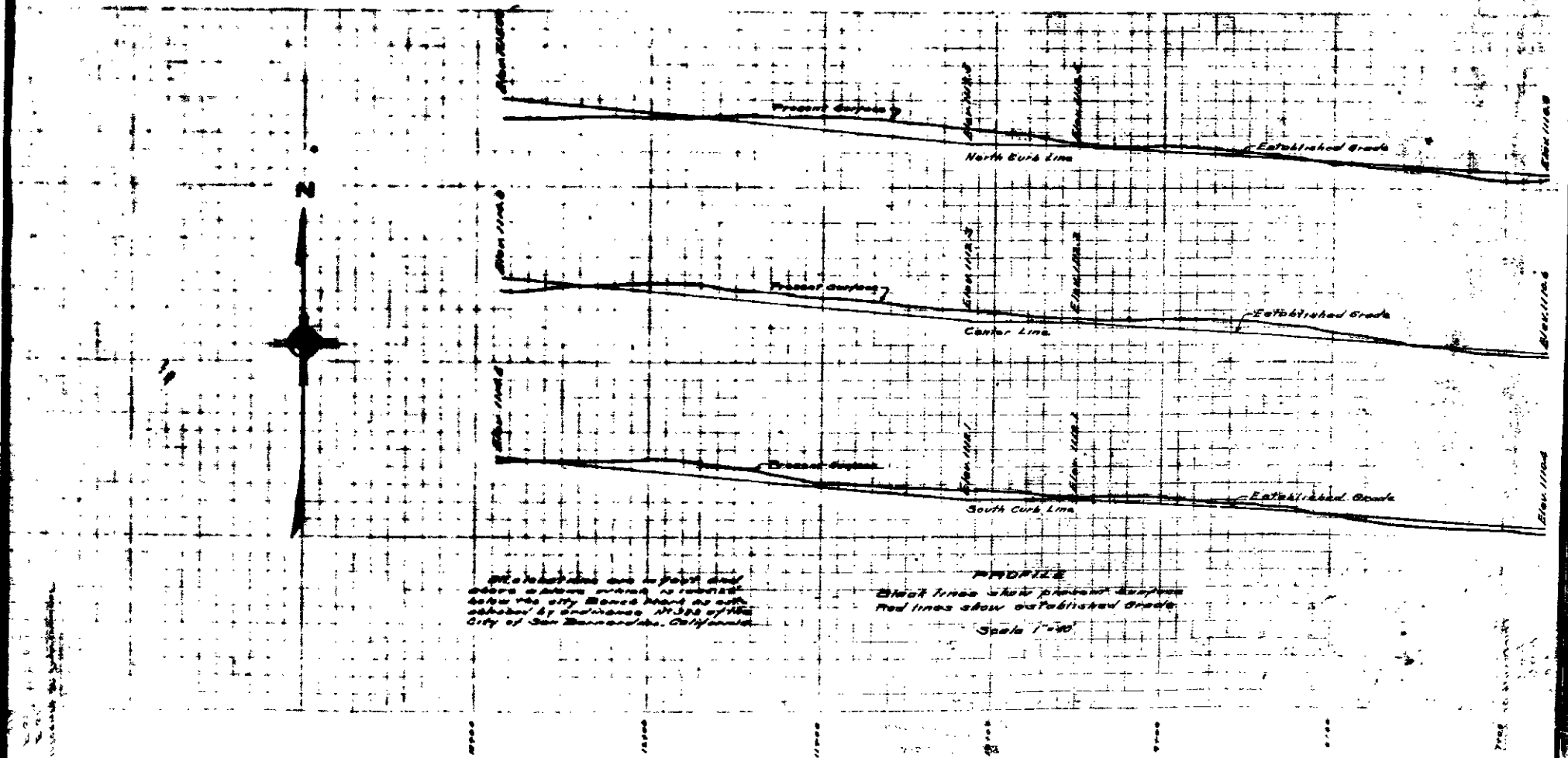
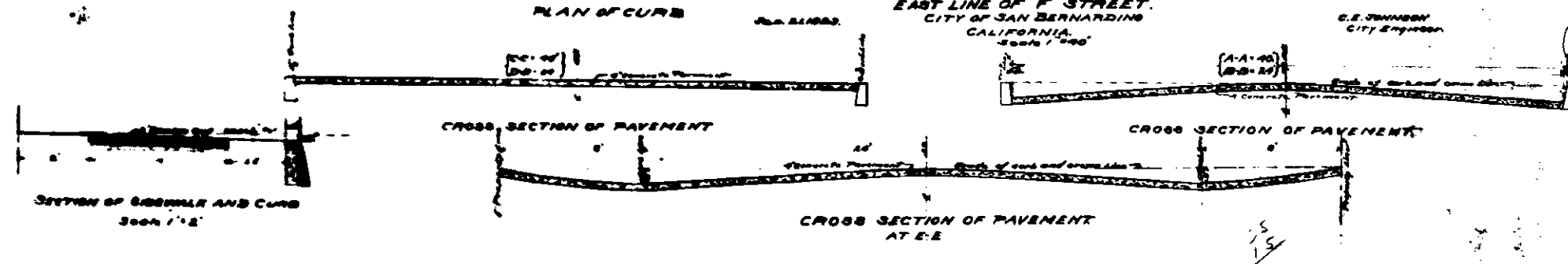
**LEGEND**

Thin means 1/2" or less  
 1/2" means 1/2" or less  
 1" means 1" or less  
 2" means 2" or less  
 4" means 4" or less  
 6" means 6" or less  
 8" means 8" or less  
 10" means 10" or less  
 12" means 12" or less  
 14" means 14" or less  
 16" means 16" or less  
 18" means 18" or less  
 20" means 20" or less  
 24" means 24" or less  
 30" means 30" or less  
 36" means 36" or less  
 42" means 42" or less  
 48" means 48" or less  
 54" means 54" or less  
 60" means 60" or less  
 72" means 72" or less  
 84" means 84" or less  
 96" means 96" or less  
 108" means 108" or less  
 120" means 120" or less  
 132" means 132" or less  
 144" means 144" or less  
 156" means 156" or less  
 168" means 168" or less  
 180" means 180" or less  
 192" means 192" or less  
 204" means 204" or less  
 216" means 216" or less  
 228" means 228" or less  
 240" means 240" or less  
 252" means 252" or less  
 264" means 264" or less  
 276" means 276" or less  
 288" means 288" or less  
 300" means 300" or less



**PLAN NO. 518.**  
**FOR THE IMPROVEMENT OF**  
**THIRTEENTH STREET**  
**FROM THE WEST LINE OF E STREET**  
**TO THE**  
**EAST LINE OF F STREET.**  
**CITY OF SAN BERNARDINO**  
**CALIFORNIA.**  
 Scale 1"=40'

C.E. JOHNSON  
 City Engineer



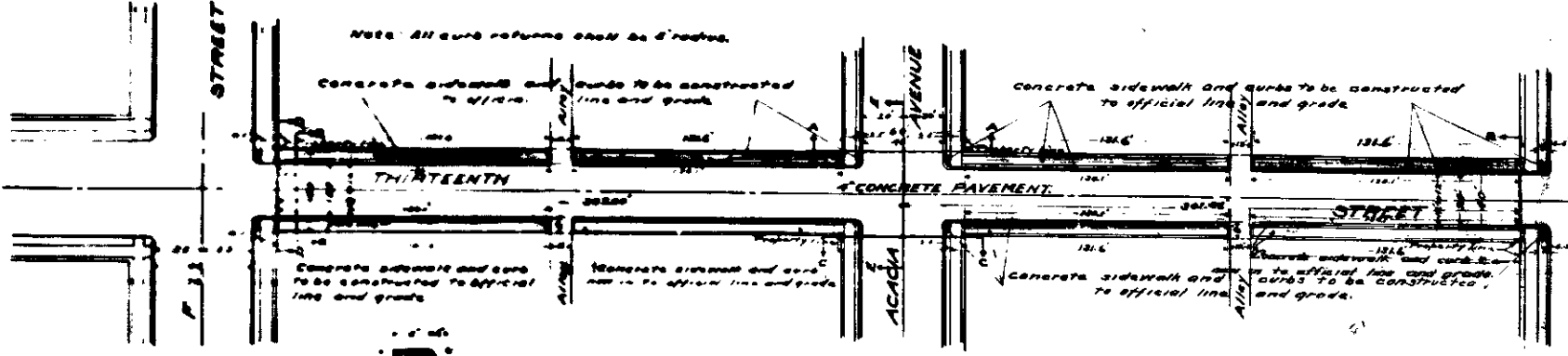
Proposed lines are in red and  
 shown in black. Existing lines  
 shown in black. Proposed lines  
 shown in red. Scale 1"=40'

**PROFILE**  
 Black lines show proposed surface  
 Red lines show established grade  
 Scale 1"=40'

**LEGEND**

1/2" = 1' means 1/2" on the drawing  
 1/4" = 1' means 1/4" on the drawing  
 ELEV means Elevation  
 C.M. means Center Line  
 Center Line of Street shown thus   
 Concrete Pavement to be constructed shown thus   
 Concrete sidewalk to be constructed shown thus   
 Concrete curb to be constructed shown thus   
 Concrete sidewalk in section shown thus   
 Concrete sidewalk in section shown thus

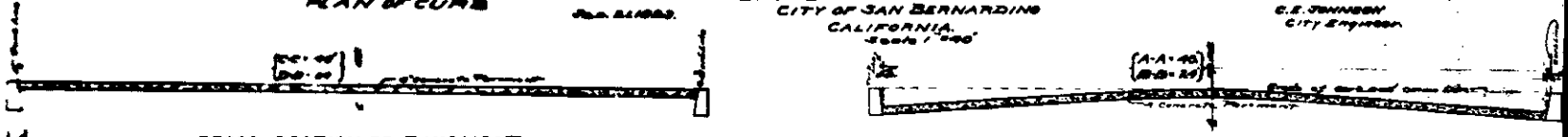
*edit*



**PLAN NO. 518.**  
**FOR THE IMPROVEMENT OF**  
**THIRTEENTH STREET**  
**FROM THE WEST LINE OF E STREET**  
**TO THE**  
**EAST LINE OF F STREET.**  
**CITY OF SAN BERNARDINO**  
**CALIFORNIA.**  
 Scale 1" = 40'

C.E. JOHNSON  
City Engineer

**PLAN OF CURB**

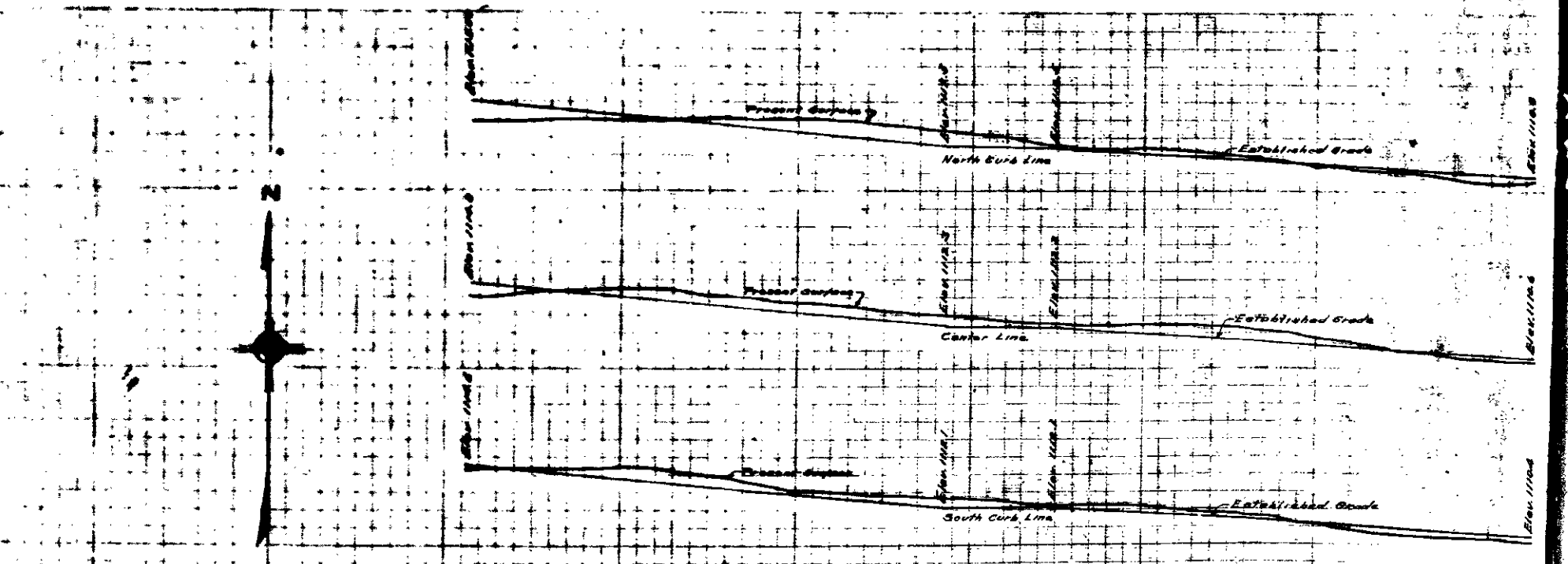


**CROSS SECTION OF PAVEMENT**

**CROSS SECTION OF PAVEMENT**

**SECTION OF SIDEWALK AND CURB**  
Scale 1" = 2'

**CROSS SECTION OF PAVEMENT AT E-E**



All elevations are in feet and  
 above a datum point as established  
 by the City Engineer as shown  
 attached to Ordinance No. 392 of the  
 City of San Bernardino, California.

**PROFILES**  
 Black lines show proposed elevations  
 Red lines show established grade.  
 Scale 1" = 40'